



## cPLA2-γ Polyclonal Antibody

<b>Catalog No</b>	YP-Ab-02551
<b>Isotype</b>	IgG
<b>Reactivity</b>	Human;Rat;Mouse;
<b>Applications</b>	WB;ELISA
<b>Gene Name</b>	PLA2G4C
<b>Protein Name</b>	Cytosolic phospholipase A2 gamma
<b>Immunogen</b>	The antiserum was produced against synthesized peptide derived from human PLA2G4C. AA range:301-350
<b>Specificity</b>	cPLA2-γ Polyclonal Antibody detects endogenous levels of cPLA2-γ protein.
<b>Formulation</b>	Liquid in PBS containing 50% glycerol, 0.5% BSA and 0.02% sodium azide.
<b>Source</b>	Polyclonal, Rabbit,IgG
<b>Purification</b>	The antibody was affinity-purified from rabbit antiserum by affinity-chromatography using epitope-specific immunogen.
<b>Dilution</b>	Western Blot: 1/500 - 1/2000. ELISA: 1/20000. Not yet tested in other applications.
<b>Concentration</b>	1 mg/ml
<b>Purity</b>	≥90%
<b>Storage Stability</b>	-20°C/1 year
<b>Synonyms</b>	PLA2G4C; Cytosolic phospholipase A2 gamma; cPLA2-gamma; Phospholipase A2 group IVC
<b>Observed Band</b>	70kD
<b>Cell Pathway</b>	Cell membrane ; Lipid-anchor . Endoplasmic reticulum membrane ; Lipid-anchor. Mitochondrion membrane ; Lipid-anchor. Lipid droplet . Translocates from endoplasmic reticulum to lipid droplets in response to oleate. .
<b>Tissue Specificity</b>	Highly expressed in heart and skeletal muscle.
<b>Function</b>	catalytic activity:Phosphatidylcholine + H(2)O = 1-acylglycerophosphocholine + a carboxylate.,enzyme regulation:Not regulated by calcium.,function:Has a preference for arachidonic acid at the sn-2 position of phosphatidylcholine as compared with palmitic acid.,similarity:Contains 1 PLA2c domain.,tissue specificity:Highly expressed in heart and skeletal muscle.,
<b>Background</b>	This gene encodes a protein which is a member of the phospholipase A2 enzyme family which hydrolyzes glycerophospholipids to produce free fatty acids and lysophospholipids, both of which serve as precursors in the production of signaling molecules. The encoded protein has been shown to be a calcium-independent and membrane bound enzyme. Multiple transcript variants encoding different isoforms have been found for this gene. [provided by RefSeq, Apr 2009],



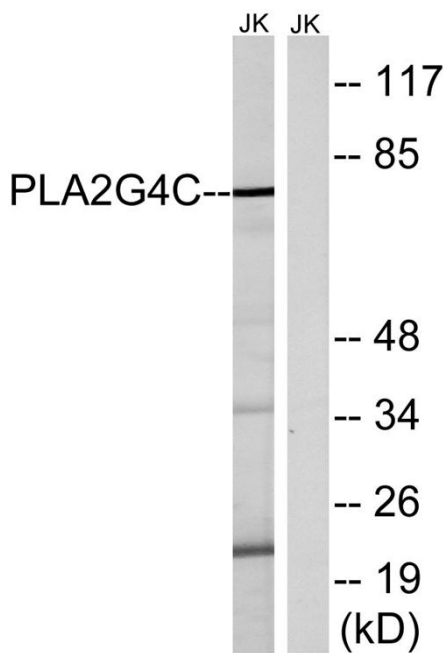
**matters needing attention**

Avoid repeated freezing and thawing!

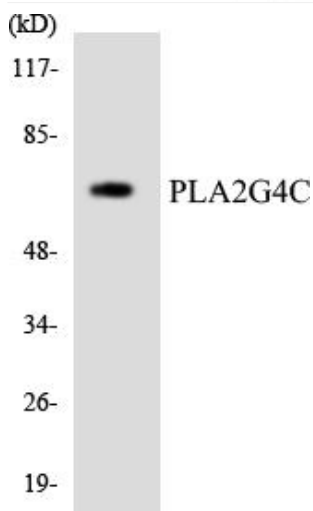
**Usage suggestions**

This product can be used in immunological reaction related experiments. For more information, please consult technical personnel.

**Products Images**



Western blot analysis of lysates from Jurkat cells, using PLA2G4C Antibody. The lane on the right is blocked with the synthesized peptide.



Western blot analysis of the lysates from HeLa cells using PLA2G4C antibody.